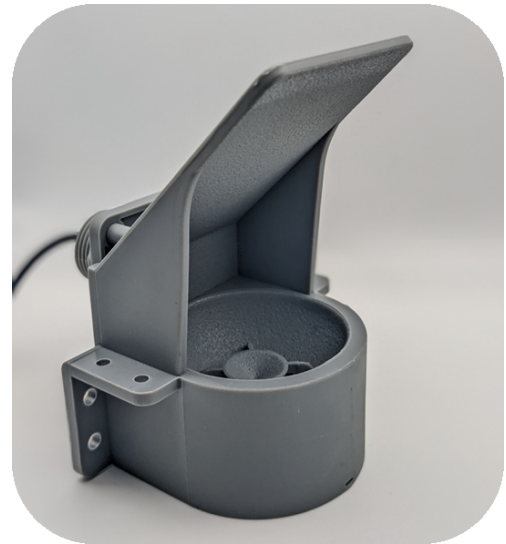




Farmblox

Silo Level Sensor



The **Farmblox Silo Level Sensor** measures fill level of maple sap, dairy or other large, silo tanks using ultrasonic.

Connecting the Silo Level Sensor to a Farmblox Wireless Monitor allows you to quickly check the current fill levels of your large silo sap or dairy tanks from wherever you are, and track changes over time from the Farmblox Dashboard. Remove guesswork, skip climbing ladders, and enjoy peace of mind knowing exactly how full they are. Set automatic alerts to warn of high silo fill levels.

The Silo Level Sensor sends out an ultrasound beam to determine distance from it to the fill level. The beam is emitted as a cone, so make sure it is well centered. The sensor is not impacted by the material of the silo or color of the liquid.

Technical Specifications

Communication

- Farmblox PnP protocol

Environmental

- Operating temperature -15°C/-5°F – 60°C/140°F

Sensor Specifics

- IP67 rated
- 15 degree beam angle

Physical

- Sensor 2.4" x 2" x 1.4"
- Cable length 6'

Mounting

- Screw or zip-tie mount

Interface

- Farmblox Wireless Monitor port

Sensor Range

- 32.8 ft/1,000cm to silo empty level
- 1 ft/25cm deadzone from sensor

Accuracy

- $\pm 1.5"$

Warranty

- 3 years

Sensor Reading Refresh Rate

- 2.5 minutes



Farmblox (617) 237-0551 | www.farmblox.ag | sales@farmblox.ag

Design Your Own Farm Automation Solution

© 2023. All rights reserved. Farmblox is a trademark of Farmblox. Product specifications are subject to change without notice. 9/3/23